

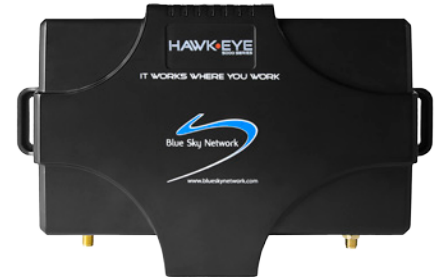
HawkEye 5300



Dual Iridium/GSM Vehicle Tracking Solution

The HawkEye 5300 (HE5300) Iridium tracking device sets a new standard for land vehicle asset tracking and management. The HE5300 provides seamless connectivity by combining Iridium and GSM networks, together in one robust device. The flexibility of the HE5300's dual-mode capabilities ensure "always connected" 100% global visibility. The HawkEye 5300 tracking device offers unparalleled configurability and convenience, providing real-time asset tracking in challenging environments.

The Iridium constellation, consisting of 66 low earth orbit (LEO) satellites, is the only satellite network in the world capable of delivering essential voice and data services where no other form of reliable communication exists. The dual-mode capabilities of the HawkEye 5300 enable users to take advantage of Iridium's global reach while also utilizing local GSM networks when available.



Feature Packed



Monitor Driver Behavior

Monitor idling, speeding, erratic driving, entering unsafe zones, vehicle status, and trip detail remotely via SkyRouter.



Reduced Asset Downtime

Device parameter configurations and firmware updates can be performed over the air without bringing the asset in for maintenance.



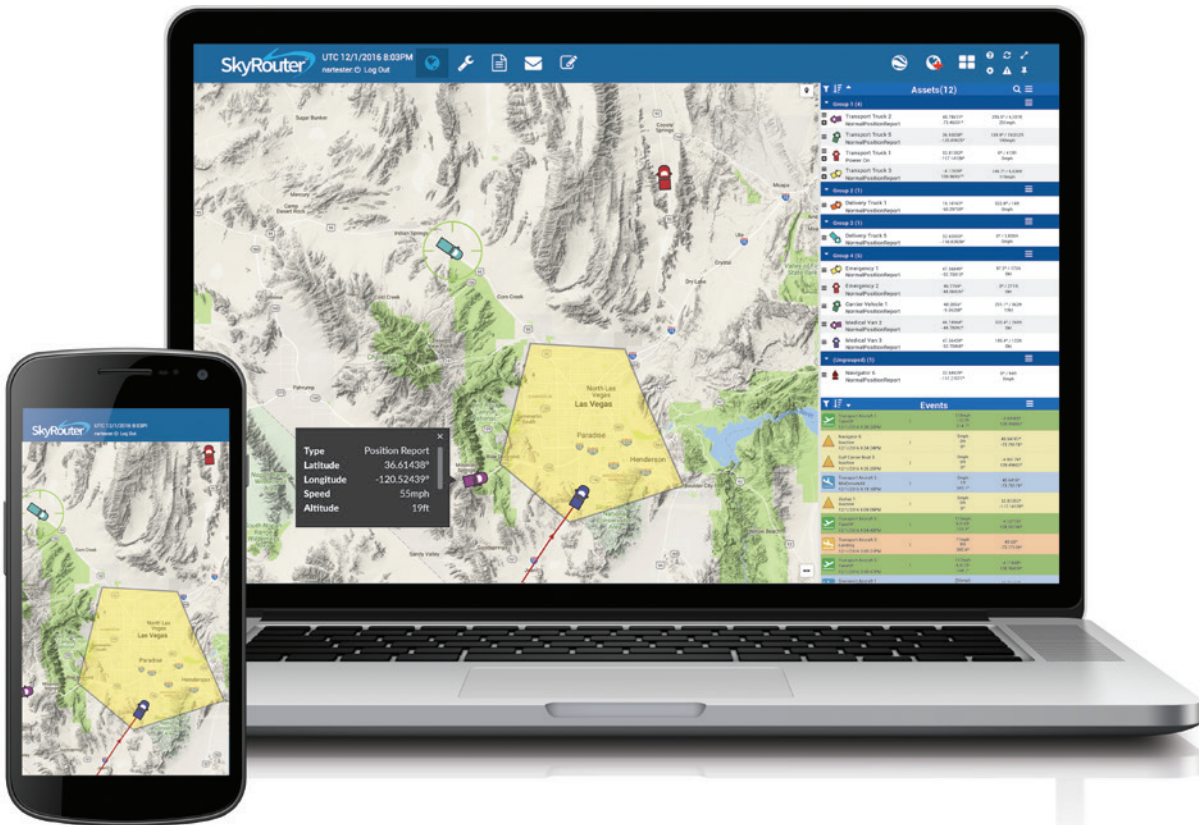
Optimized Airtime & Usage

With dual-mode coverage users can obtain the benefits of GSM coverage and maintain connectivity via Iridium in remote and spotty cell coverage regions.



OBDII Vehicle Diagnostics

The device can interface to an OBDII kit, which allows for Diagnostic Trouble Codes (DTC) to be sent from the assets to SkyRouter. The OBDII interface also enables mileage and fuel usage reporting.



Key Features of 5300 + SkyRouter



Dynamic Reporting

Define and customize your automatic event triggers, reporting intervals and device, usage and invoice data reporting.



Completely Secure

Hosted on fully redundant servers controlled by secure service gateway (SSG devices).



Seamless Communication

Two-way messaging, emails, SMS, short codes, emergency and 4-dimensional alert capabilities, along with two-way voice call capability.



Device and Server-Side Geofencing

The device works directly with SkyRouter to support advanced variable response (AVR), compound rule, and device-side geofencing to trigger automated alerts and device behavior changes.



Enhanced Map Management

Comprehensive map overlays and real-time, single- and multi-screen views.



Remotely Accessible

SkyRouter is touch screen friendly on any Android or iOS device.



Certified homologation to operate in Brazil and Russia